



Bell 525



SPEED. SAFETY. STYLE.

Set a new standard for flight with this new, 21st century aircraft. Flexible cabin layouts Single-engineflyaway capability. Superior payload and range performance. And exceptional visibility – all meet and exceed industry standards.

DIGITAL COMMAND

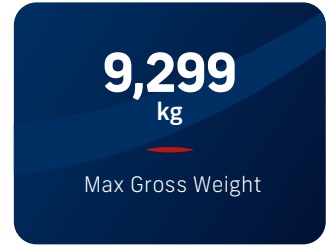
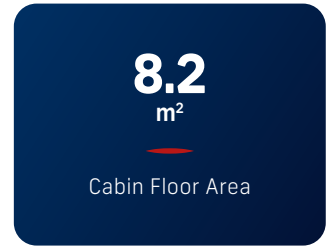
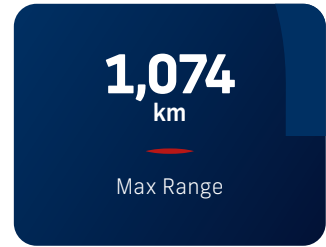
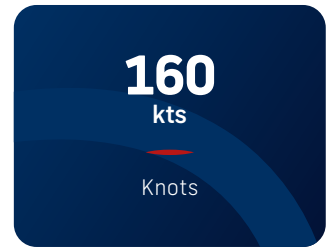
Pilots stay aware of their surroundings at all times flying the Bell 525 with Garmin's top-of-the-line G5000H avionics suite featuring a touch screen interface and synthetic vision technology. Large displays and visualizations of the terrain, potential obstacles and other aircraft keep pilots aware. The flight deck layout also gives crew superior over-the-nose visibility and comfort with side stick controllers.

ADVANCED ROTORCRAFT DESIGN

Based on a clean sheet design incorporating advancements in engine, airframe, drive system and avionics designs, the Bell 525 meets current FAA and EASA safety standards – including bird strike protection, drive system loss of lubrication, fatigue, and damage tolerance. Operators benefit from improved fuel efficiency and lower direct operating costs.

POWERFUL RELIABILITY

The Bell 525 is powered by two electronically controlled GE CT7-2F1 engines. These engines provide a dual-channel FADEC system and 2000 SHP that deliver exceptional performance along with a maximum cruise speed of 160 kts (296 kph).





THE NEW GLOBAL STANDARD

There were two main drivers behind the Bell 525 design: leading-edge innovation and a relentless pursuit of perfection. The result? A revolution in operational reliability and advanced, integrated technology. Our flagship Bell 525 model offers unparalleled performance and situational awareness across a diverse range of missions. Creating a class of its own, the 525 offers record-setting speed, payload and range for enhanced pilot operation, along with elevated comfort and versatility for passengers. Designed to meet the newest FAA certification standards, the 525 will be the most thoroughly tested aircraft in the rotorcraft market.

CUSTOMIZED COMFORT

Three baseline interiors configure the Bell 525 for 8, 10 or 12 passengers, making it easy to accommodate individual needs. These versatile configurations include table space, beverage holders and general storage space to keep passengers comfortable and productive on the go. Power outlets, two-tone leather seats, fresh air vents, color-matched carpet and electrochromic windows allow owners to match their unique style.

MAXIMUM REACH

Get where you need to go seamlessly, whether your engagements are intricacy or from one town to the next. The Bell 525 offers long range and high speed, covering distances up to 500 nautical miles and speeds pushing 175 kts, setting new standards in rotorcraft performance.

TRIPLEX ADVANTAGE

As the first commercially certified fly-by-wire (FBW) helicopter, the Bell 525 is the future of vertical flight. The continuously active FBW control laws are there when you need them, while the pilot is always in direct control of the aircraft. The system makes flying repeatable, simple and intuitive. With triple redundant systems, the Bell 525 provides reliability for your pilots and passengers when they're far away from home.

INDUSTRY-LEADING ECONOMICS

Nothing makes travel more stressful than a grounded aircraft. We've designed the Bell 525 to wake up and fly every day. Maintenance is simpler than that of legacy aircraft, with an efficient MSG-3 maintenance program and long overhaul cycles. Integrated Vehicle Health Management provides extensive aircraft monitoring along with predictive diagnostic tools to improve flight safety and optimize availability.



ALL-IN CUSTOMER SERVICE THAT DELIVERS VALUE THROUGHOUT YOUR OWNERSHIP CYCLE

Around-the-clock. Award-winning. Always on. At Bell, our customer service is all of these and more. Rated number one in the industry, our global network is available on every continent, in every region. So when you own a Bell, you can be sure your aircraft will have the parts, expertise and support needed to achieve its mission.



GARMIN G500H

Avionics incorporating the first touchscreen glass flight check design for helicopters.

TECHNICAL SPECIFICATIONS

Performance at Max Gross Weight

Max Cruise Speed	160 kts	296 km/h
Max Range¹	580 nm	1,074 km

Powerplant

Engines	2 x GE CT7-2F1
----------------	----------------

Capacity

Standard Seating (20 in wide seats)	2 Flight Crew + 16 Passengers	
High Density Seating	2 Flight Crew + 20 Passengers	
Standard Fuel	641 US gal	2,426 liters
Passenger Cabin Height	54 in	137 cm
Passenger Cabin Floor Area	88 ft ²	8.2 m ²
Baggage Compartment Volume	128 ft ³	3.6 m ³

Ceiling Altitudes

Hover Ceiling IGE²	10,700 ft	3,261 m
Hover Ceiling OGE²	8,100 ft	2,469 m

Weights

Max Gross Weight	20,500 lb	9,299 kg
Max Gross Weight (External Load)	21,500 lb	9,752 kg

¹ Max GW, Sea Level, ISA, standard fuel, no reserve, V_{LRC}

² Max GW, ISA day

CONTACT

Centaurium Aviation^{Ltd}

Girardstrasse 61
2540 Grenchen
Switzerland

Phone +41 32 500 20 28
info@centaurium-aviation.com

